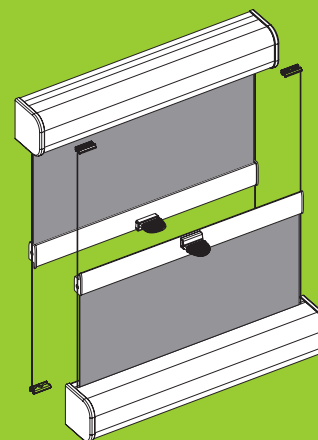


## Type R155

<b>Order width:</b>	max.1.50 m
<b>Order height:</b>	max.1.50 m
<b>Angle of inclination:</b>	max.15°
<b>Operation:</b>	Operating element
<b>Pattern of the hanging:</b>	Optional facing inwards or facing outwards (standard: facing inwards)
<b>Profile colour:</b>	Standard white RAL 9016 or grey RAL 9006 Optional black RAL 9005 or brown RAL 8077
<b>Operation option:</b>	Control rod 1.00 m, 1.50 m or 2.00 m

The tensioned vario roller blind Type R155 can be used variable.  
The cassette can be mounted at the top or at the bottom.  
The hanging is brought in each desired position with the operating handle.



Tensioned vario roller blind with operating handle and two-piece cassette profil.

TYPE R155

## Measuring and ordering

[www.rolety.czyst.pl](http://www.rolety.czyst.pl)

**Note:** Please exercise the greatest care when measuring up (dimensional tolerance  $\pm 1$  mm).

### Roller blind width

From the topmost point of the left cover cap to the outermost point of the right cap. The fabric is 21 mm narrower than the roller blind is.

### Roller blind height

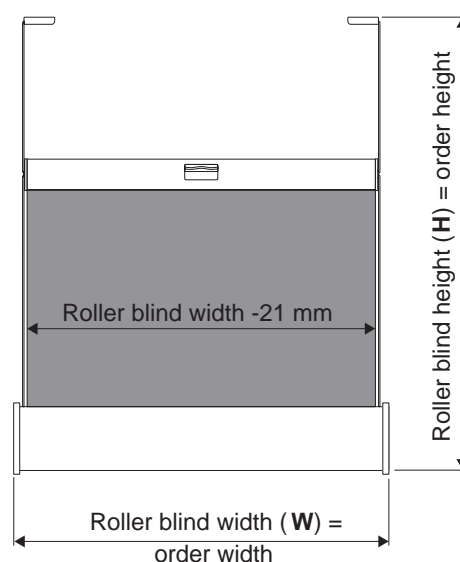
From the topmost point of the cassette to the topmost point of the tension feet.

### Order dimension = order width (W) and order height (H)

The basic price is determined on the basis of the width ( **W** ), the height ( **H** ) and the fabric quality (note the price group).

The additional charge for the types will be added to the basic price.

Additional charges for mounting variants or special accessories are added to the basic price.



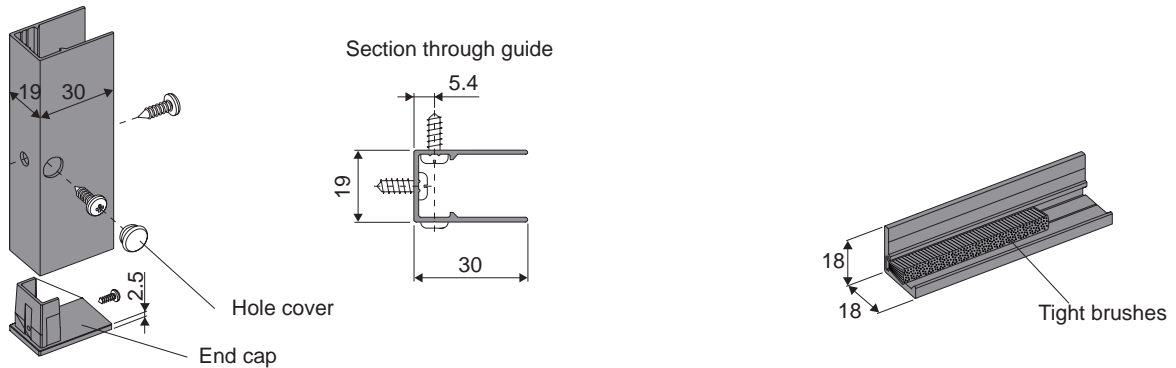
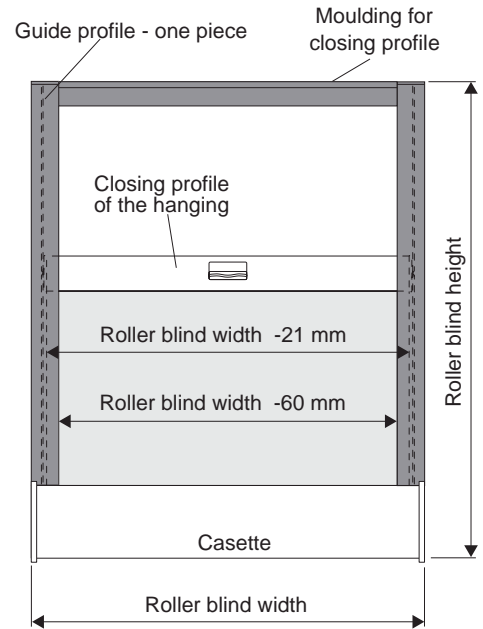
The **guide profile one-piece** is available as an equipment option for Type R155. The closing profile of the hanging (on request with tight brushes) runs in the guide profile. The fabric of the hanging extends into the guide profile on both sides. In this way the light gap at the side is covered in the optimum manner. (Max. angle of inclination 15°.)

**Colour (profile):** Matches the cassette colour.

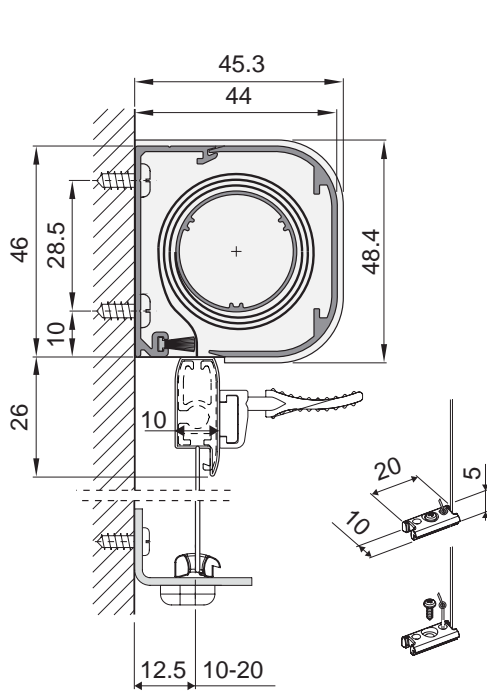
**Accessories:** Moulding for closing profile with tight brushes, tight brushes for closing profile of the hanging.

**Mounting:** The profile is mounted on the wing of the window, on the frame, on the wall or in the window jamb.

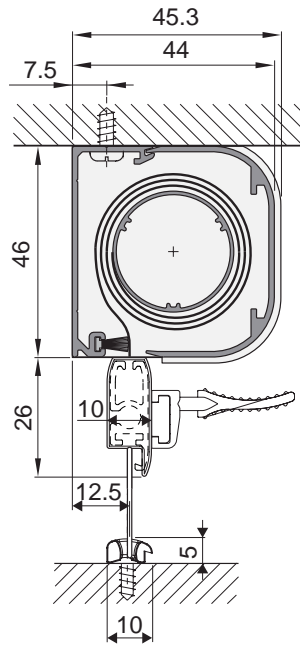
**Note:** *If mounted in the window jamb, measure the reveal at several points to determine the exact dimensions. The cassette and the guide profile must be mounted parallel and perpendicular.*



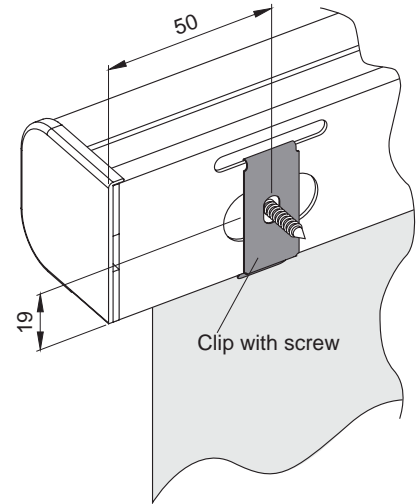
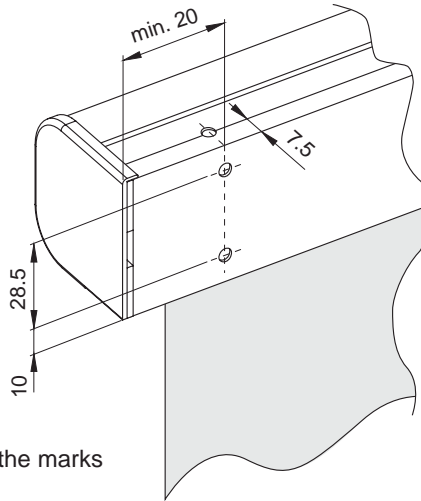
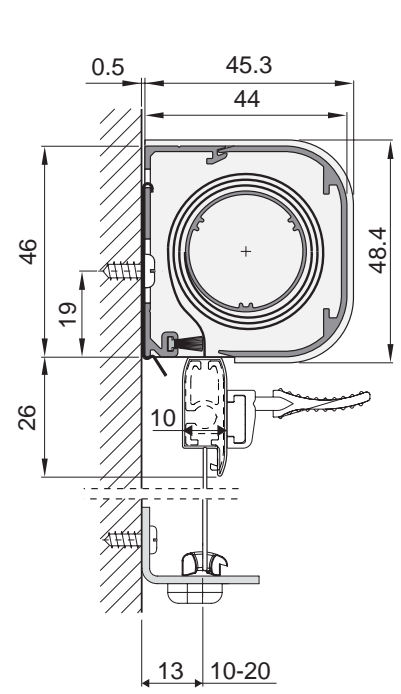
**Wall mounting**  
(screwed mounting)



**Ceiling mounting**  
(screwed mounting)



**Wall mounting**  
(clip mounting)



**Note:**

Holes may only be drilled in the marks provided in the profile.

- Mount the base profile
- Push the cover profile/roller blind onto the base profile
- Put the end caps on
- Mount the tension feet

