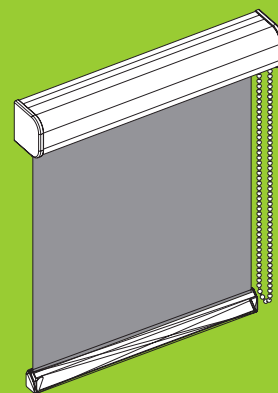


## Type R115

<b>Order width:</b>	max.1.00 m (roller blind height max. 2.00 m) max.1.50 m (roller blind height max. 1.50 m)
<b>Bestellhöhe:</b>	max.1.50 m (roller blind width max. 1.50 m) max.2.00 m (roller blind width max. 1.00 m)
<b>Note:</b>	Please note the maximum dimensions of the hanging
<b>Angle of inclination:</b>	max.15°
<b>Operation:</b>	Chain
<b>Operation side:</b>	Optional left or right
<b>Operation height:</b>	Standard = Order height
<b>Pattern of the hanging:</b>	Optional facing inwards or facing outwards (standard: facing inwards)
<b>Profile colour:</b>	Standard white RAL 9016 or grey RAL 9006 Optional black RAL 9005 or brown RAL 8077



Side control roller blind with two-piece cassette profile.

TYPE R115

## Measuring and ordering

[www.rolety.czest.pl](http://www.rolety.czest.pl)

**Note:** Please exercise the greatest care when measuring up (dimensional tolerance  $\pm 1$  mm).

### Roller blind width

From the outermost point of the left cover cap to the outermost point of the right cover cap.

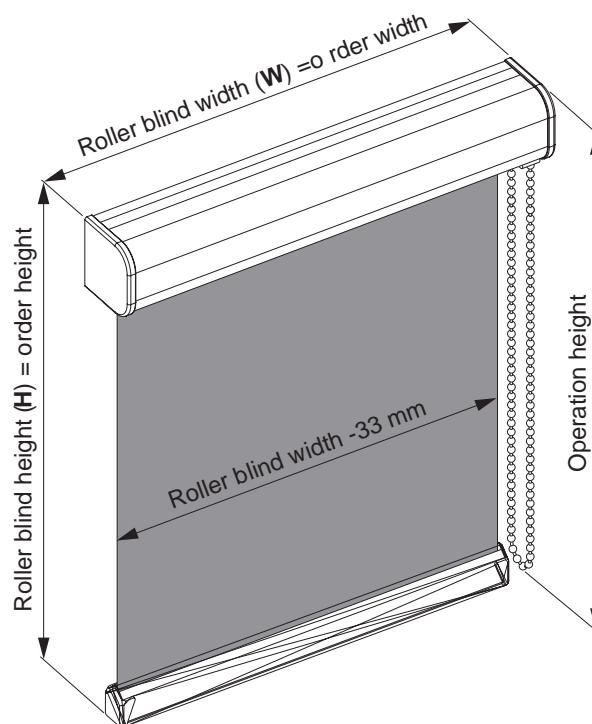
### Roller blind height

From the topmost point of the cassette to the bottommost point of the closing profile of the hanging.

**Roller blind width (W) = Order width**  
**Roller blind height (H) = Order height**

The basic price is determined on the basis of the width (W), the height (H) and the fabric quality (note the price group). The basic price together with the surcharge for Type R115i produces the final price.

Additional charges for guide profiles, mounting variants or special accessories are added to the basic price.

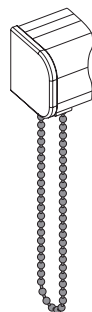


## Operation

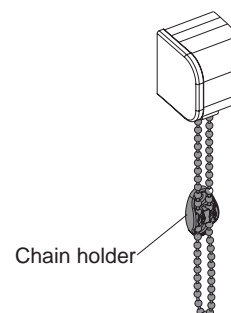
Up to an order height of 1.50 m the side control roller blind Type R115 is fitted with a chain drive.

Over an order height of 1.50 m the position of the hanging is controlled by means of a chain holder system (the chain is fixed in the chain holder).

**Chain drive**  
max. 1.50 x 1.50 m (W x H)



**Chain holder system**  
max. 1.00 x 2.00 m (W x H)



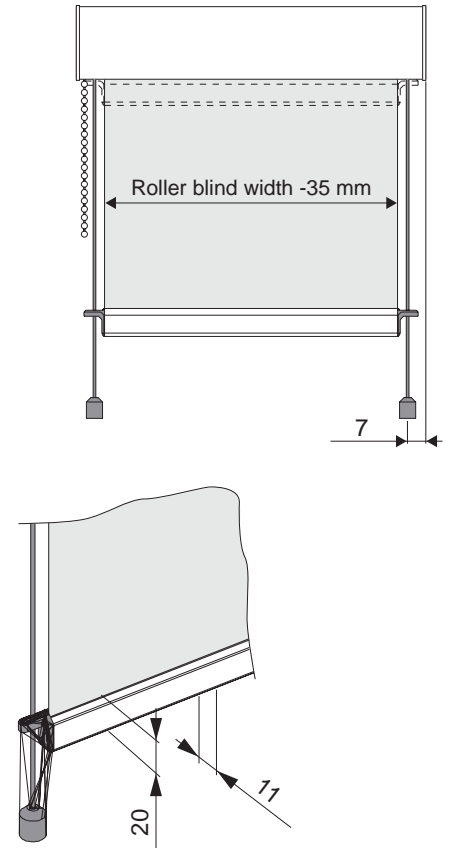
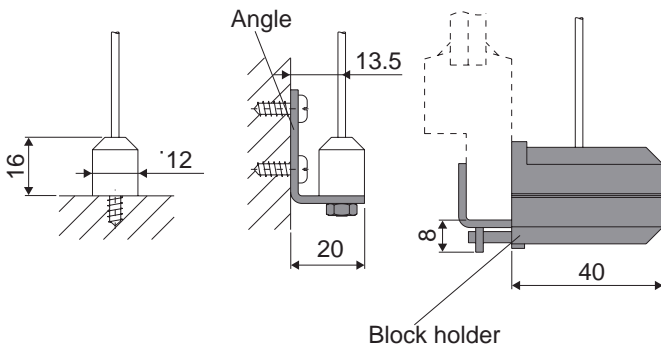
The **cord guiding** is available as an equipment option for Type R115.

The hanging of the roller blind is guided between two cords running parallel to the wing of the window also when the window is in the inclined position (max. angle of inclination 15°). The cord is invisibly mounted in the cord guiding groove of the cassette profile. The cord runs through end pieces on the closing profile of the hanging which guarantee reliable guiding.

**Material (cord):** Standard = steel, plastic-coated, transparent or white (1.4 mm) or nylon, transparent (2 mm).

**Accessories:** Angle bracket for cord fixing (galvanised), block holder for cord fixing.

## Cord fixing



# Profile guiding

The **guide profile one-piece** is available as an equipment option for Type R115.

The closing profile of the hanging (on request with tight brushes) runs in the guide profile. The fabric of the hanging extends into the guide profile on both sides. In this way the light gap at the side is covered in the optimum manner. (Max. angle of inclination 15°.)

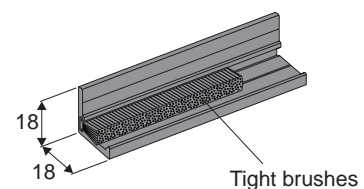
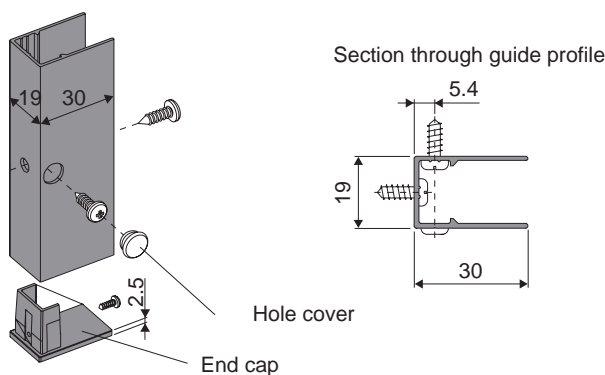
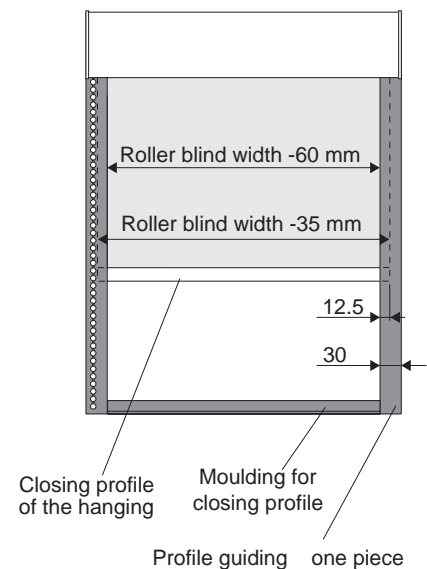
**Colour (profile):** Matches the cassette colour.

**Dimensions:** Cross-section = 30 x 19 mm / length = max. 2.00 m.

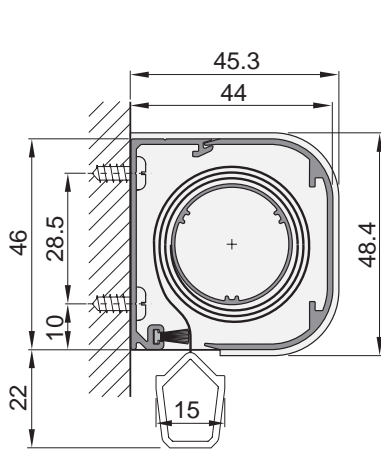
**Accessories:** Moulding for closing profile with tight brushes, tight brushes for closing profile of the hanging.

**Mounting:** The profile is mounted on the wing of the window, on the frame, on the wall or in the window jamb.

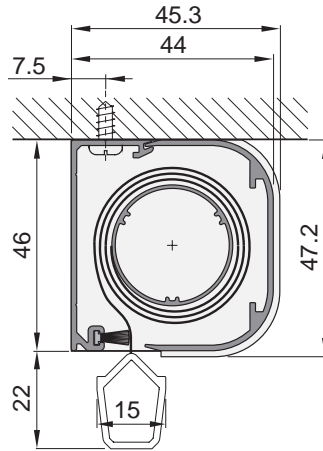
**Note:** *If mounted in the window jamb, measure the reveal at several points to determine the exact dimensions. The cassette and the guide profile must be mounted parallel and perpendicular.*



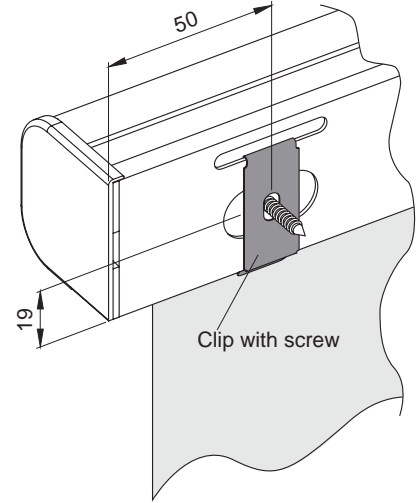
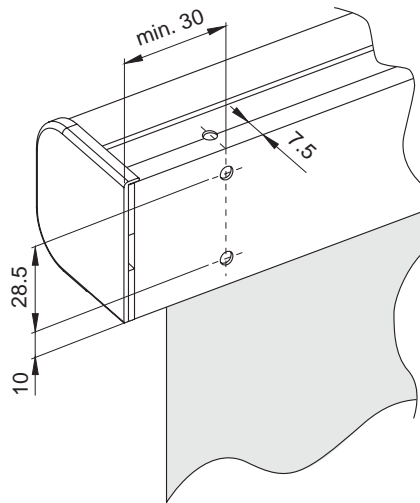
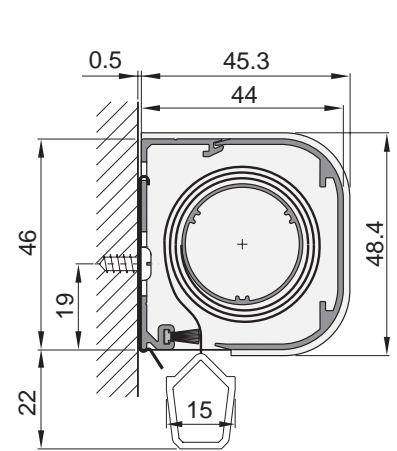
**Wall mounting**  
(screwed mounting)



**Ceiling mounting**  
(screwed mounting)



**Wall mounting**  
(clip mounting)



**Note:**  
Holes may only be drilled in the marks provided in the profile.

- Mount the base profile
- Push the cover profile/roller blind onto the base profile
- Put the end caps on

